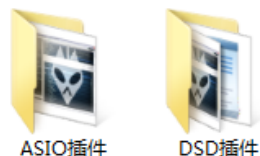


1. Installation instruction:

This driver is network shareware, rights belong to owner!

Using foobar2000 play DSD format files need following two plug-in. The two plug-in are provided in disk.

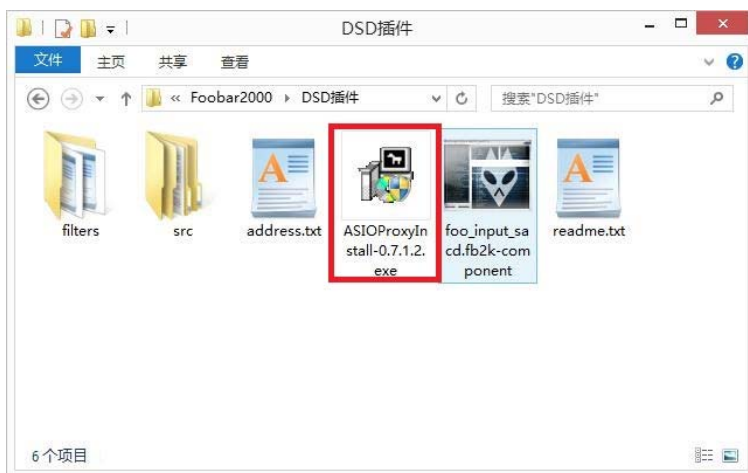


- ❖ After installing foobar2000, the icon of components will become foobar style.
- ❖ This instruction is only suitable for Windows XP/7/8/8.1/10 users.
- ❖ Mac OS X users need not install this driver.

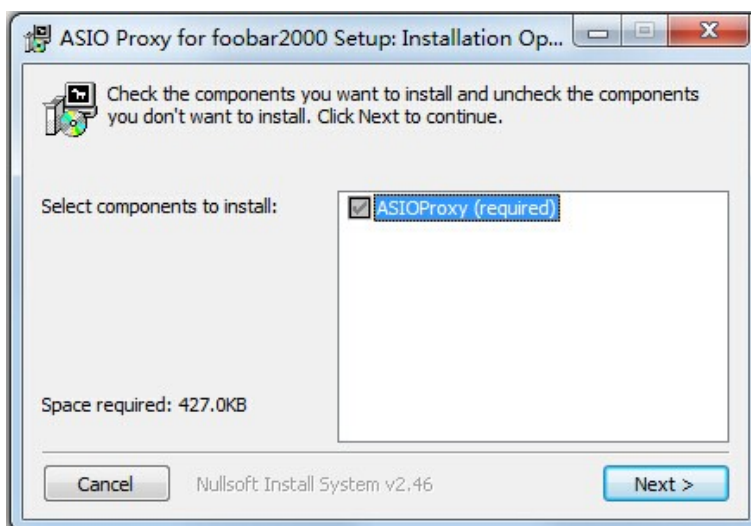
2. Installation steps:

Install DSD plug-in

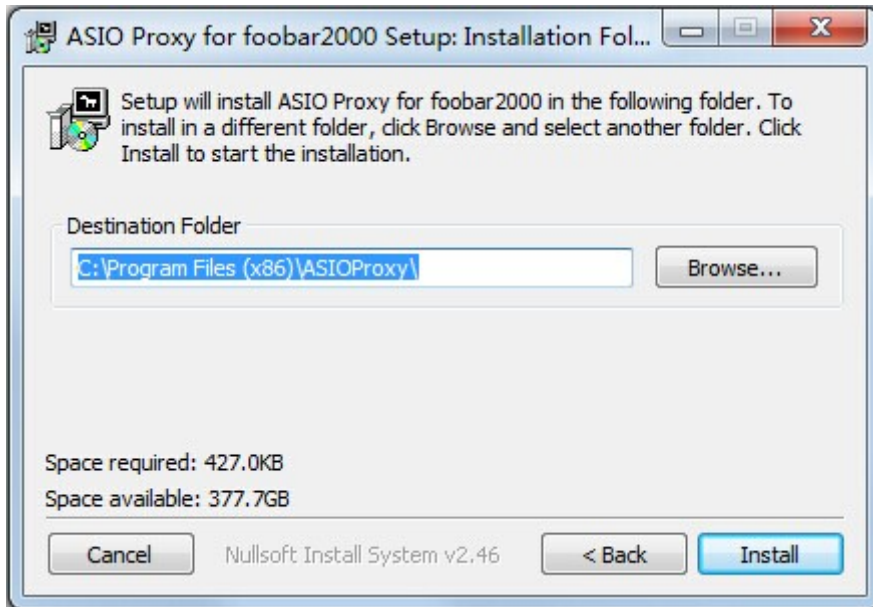
1. Double-click "ASIOProxyInstall-0.7.1.2.exe" under "DSD plug-in" folder, and then install it.



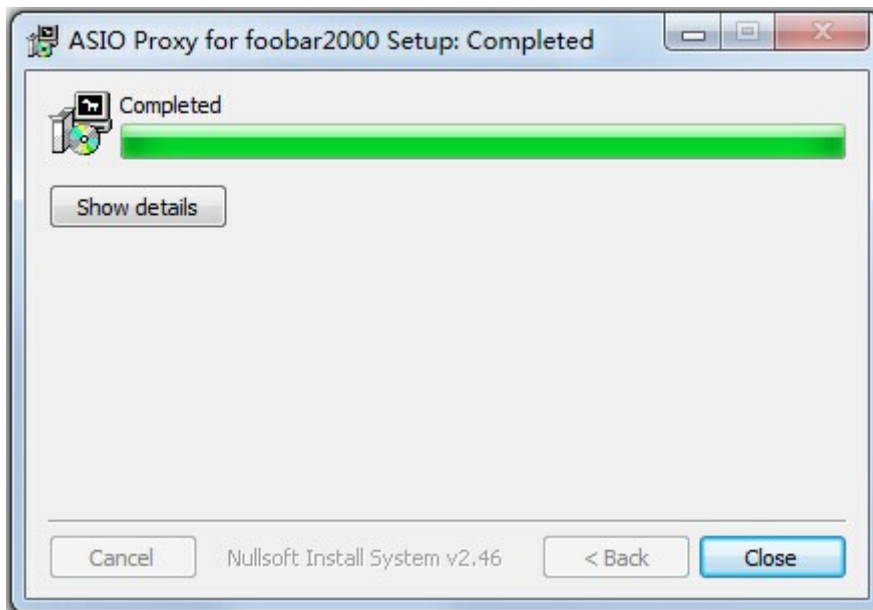
2. Click "NEXT";



3. Select installation route(using default route) , and click "Install"



4. Installation finished , choose "Close"



Install SACD Plug-in

Double click "foo_input_sacd.fb2k-component" from DSD plug-in folder

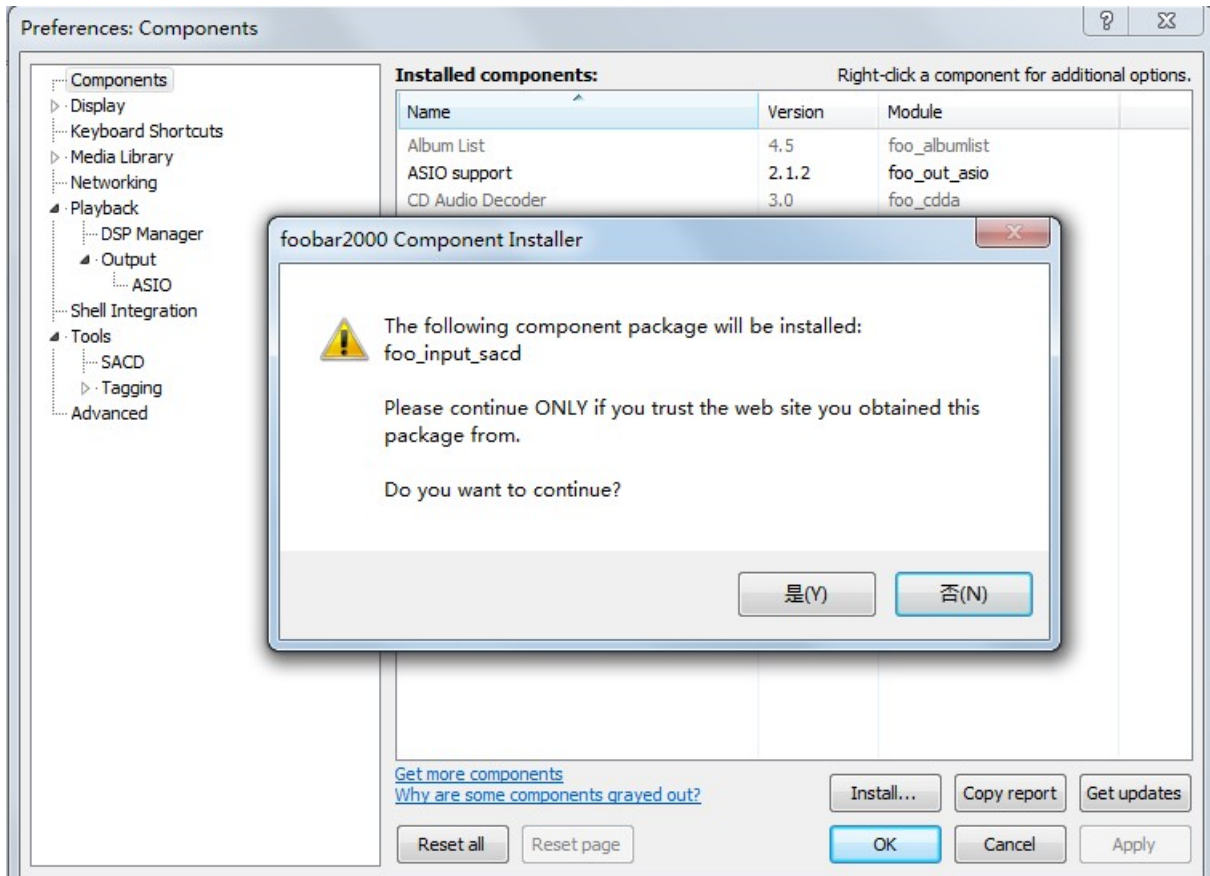
→single click" Y"

→single click" OK" .

Other plug-ins like" foo_out_asio" " WASAP" can be installed by same way.

More Plug-in download from foobar2000 official website:

<http://www.foobar2000.org/download>

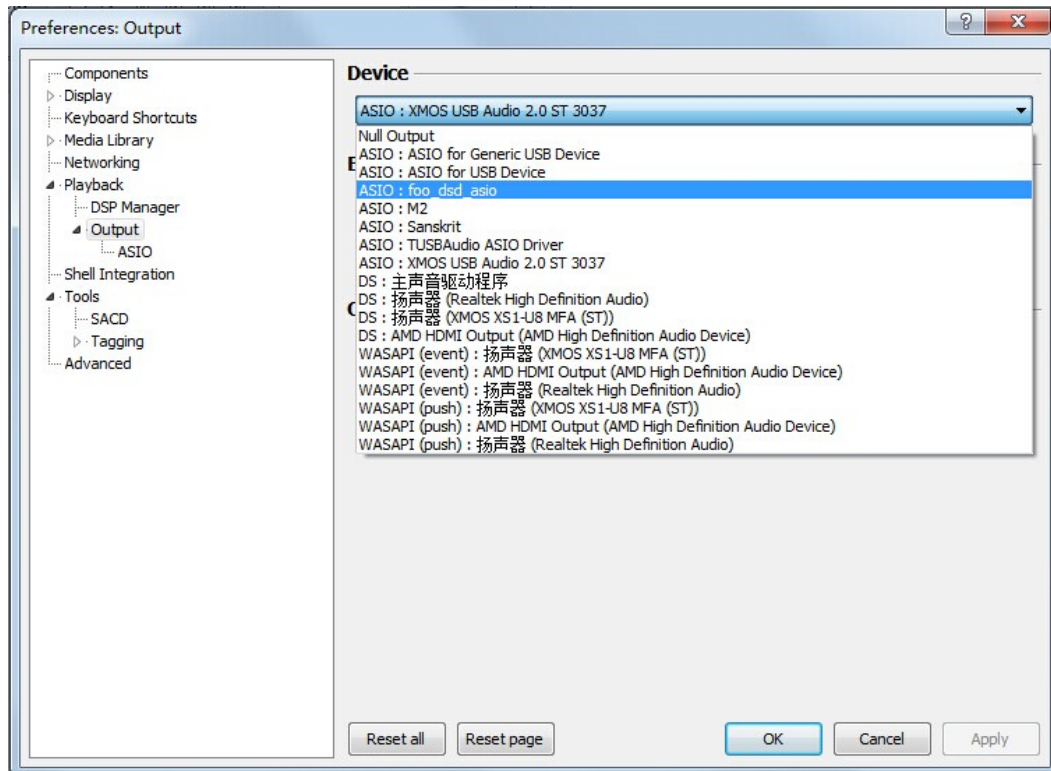


3. DSD playback settings:

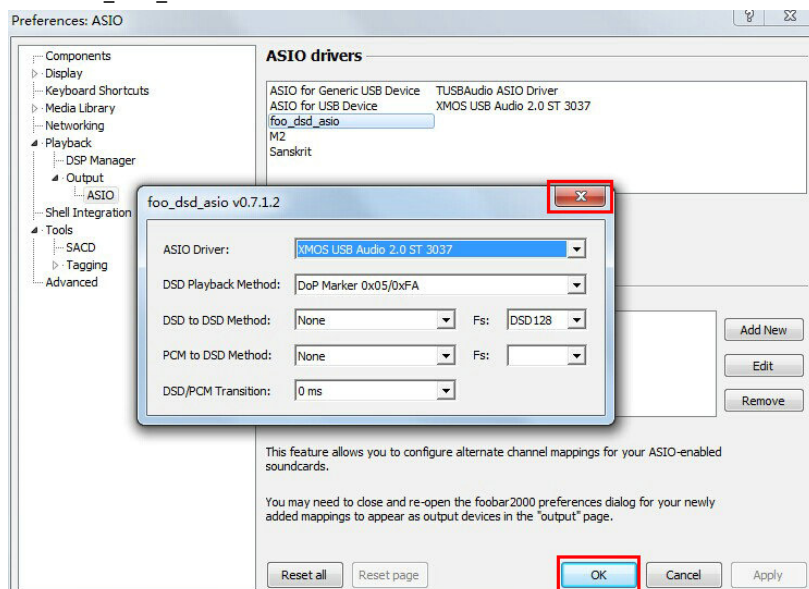
Warning:

Please set the system volume to MAX when playing DSD Music.

1. Open Foobar2000, and find out "Files→Preference→Playback→Output→Device"
Set as "ASIO : foo_dsd_asio"



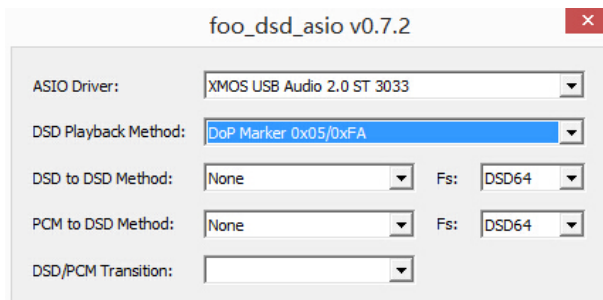
2. Find out "Files→Preference→Playback→Output→ASIO→ASIO device"
Double click "foo_dsd_asio"



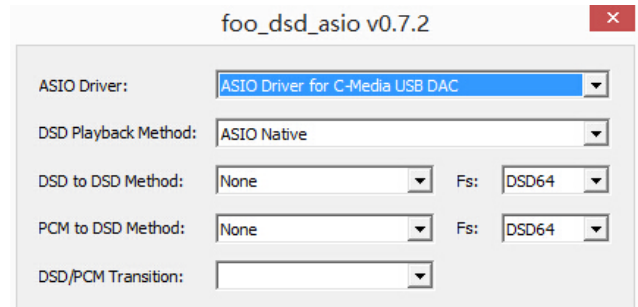
foo_dsd_asio settings:

According to different device model,you need to choose different method.like below shows:

XMOS Chipset



CM6632A Chipset



3. Files→Preference→Tools→SACD ,Set DSD under "ASIO Driver Mode" other settings check below picture.

