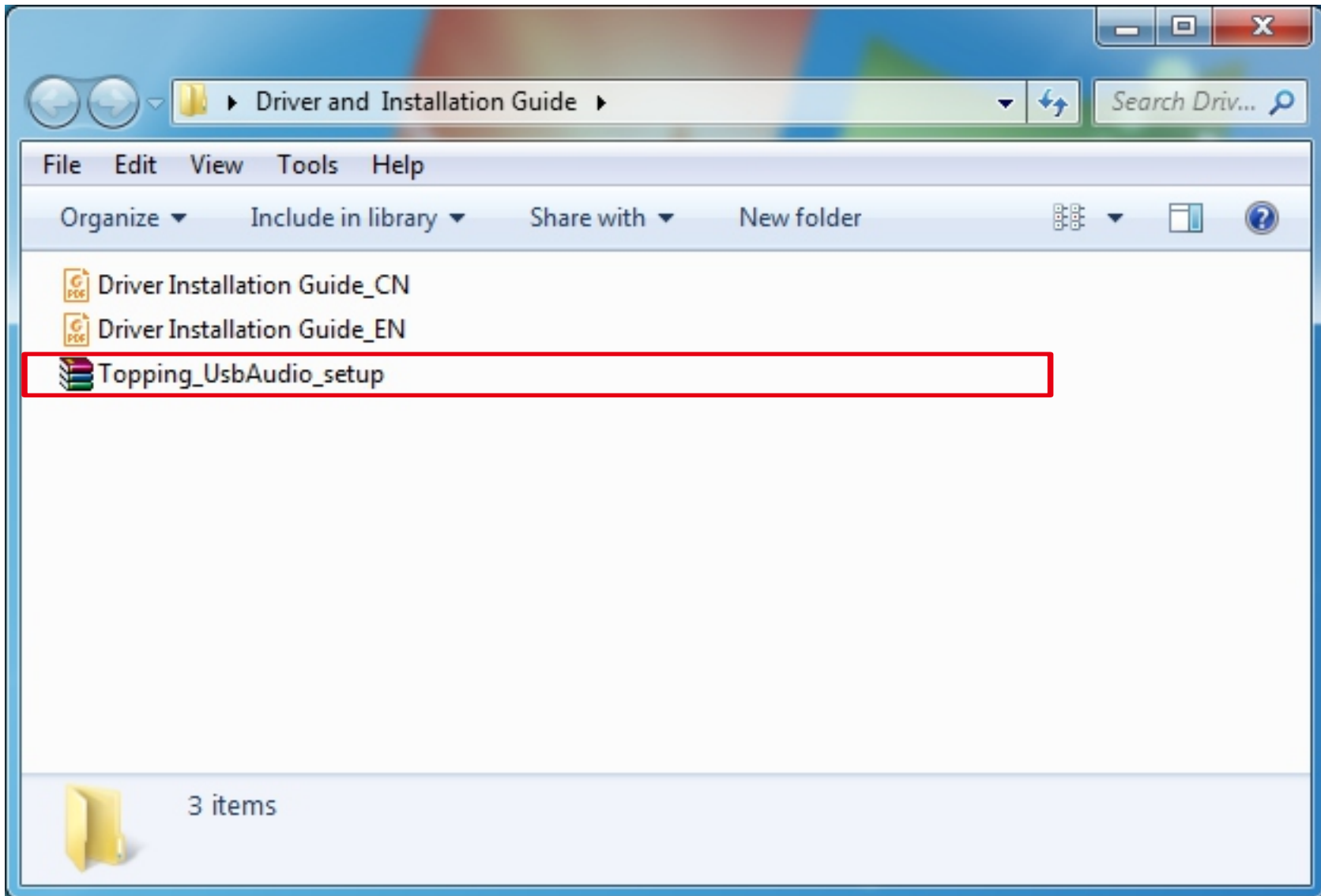


TOPPINGTM

Driver and Installation Guide

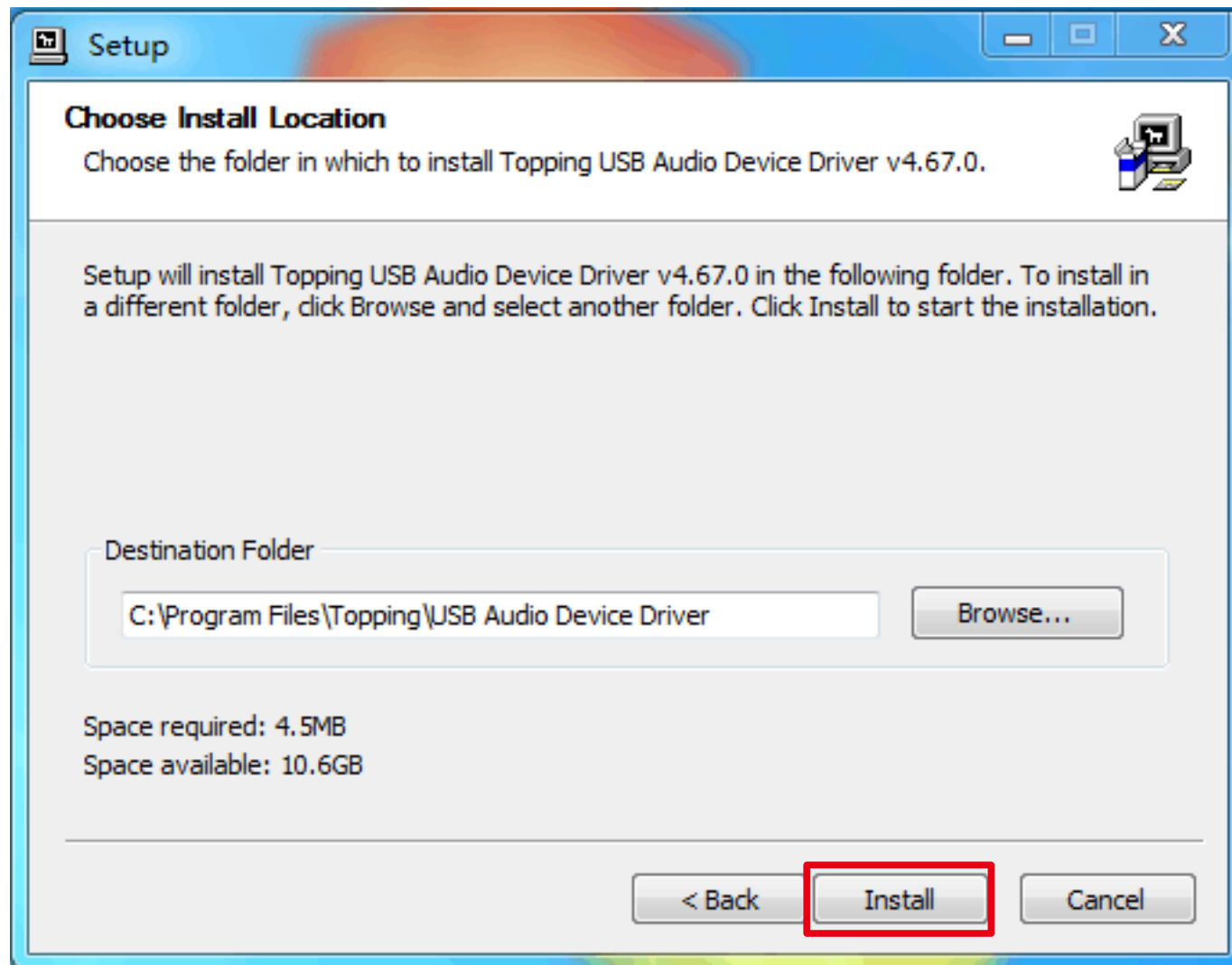
Find "Topping_UsbAudio_setup.zip" at folder "Driver and Installation Guide", unzip it, run "Topping_UsbAudio_setup.exe".



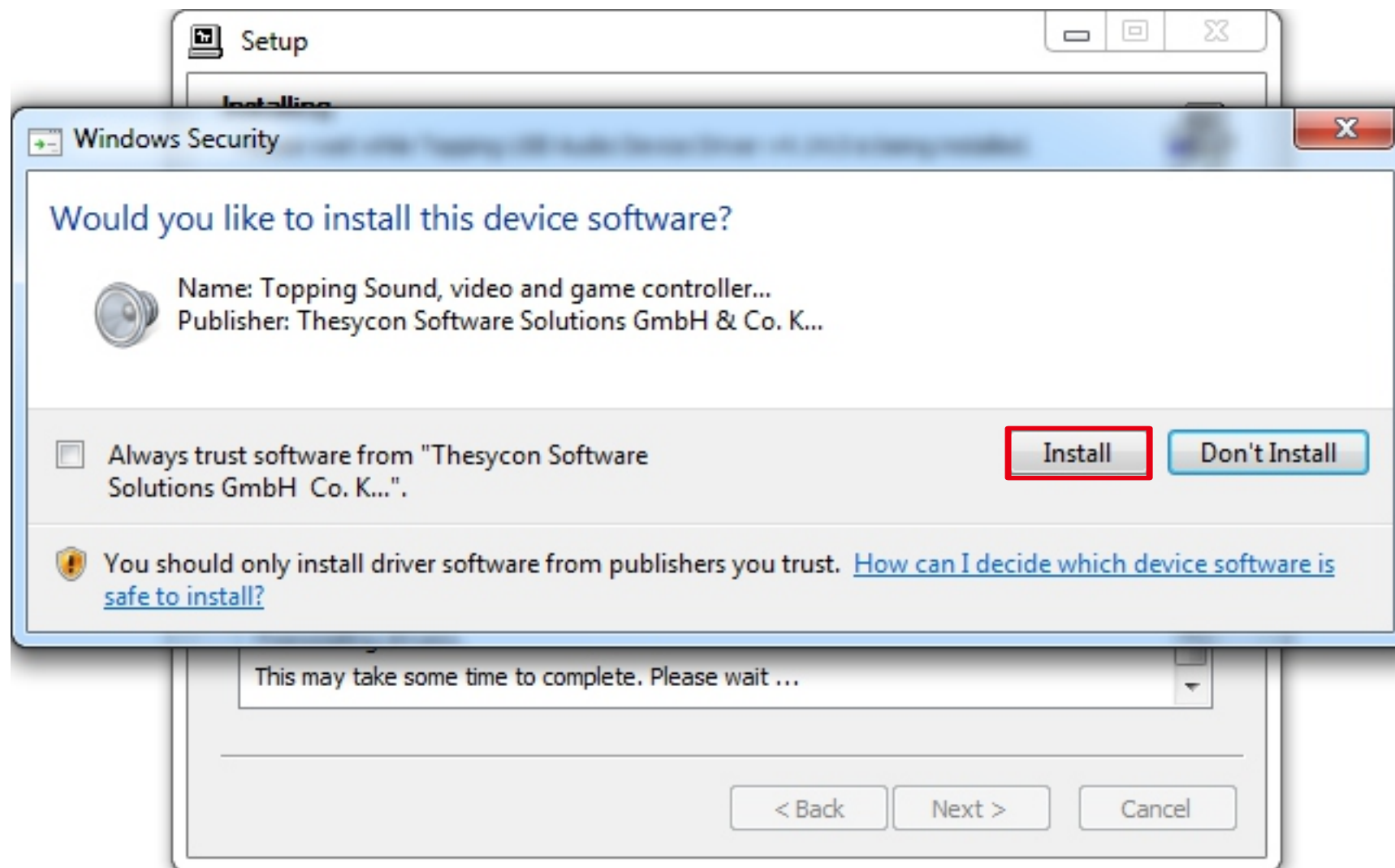
Click "Next".



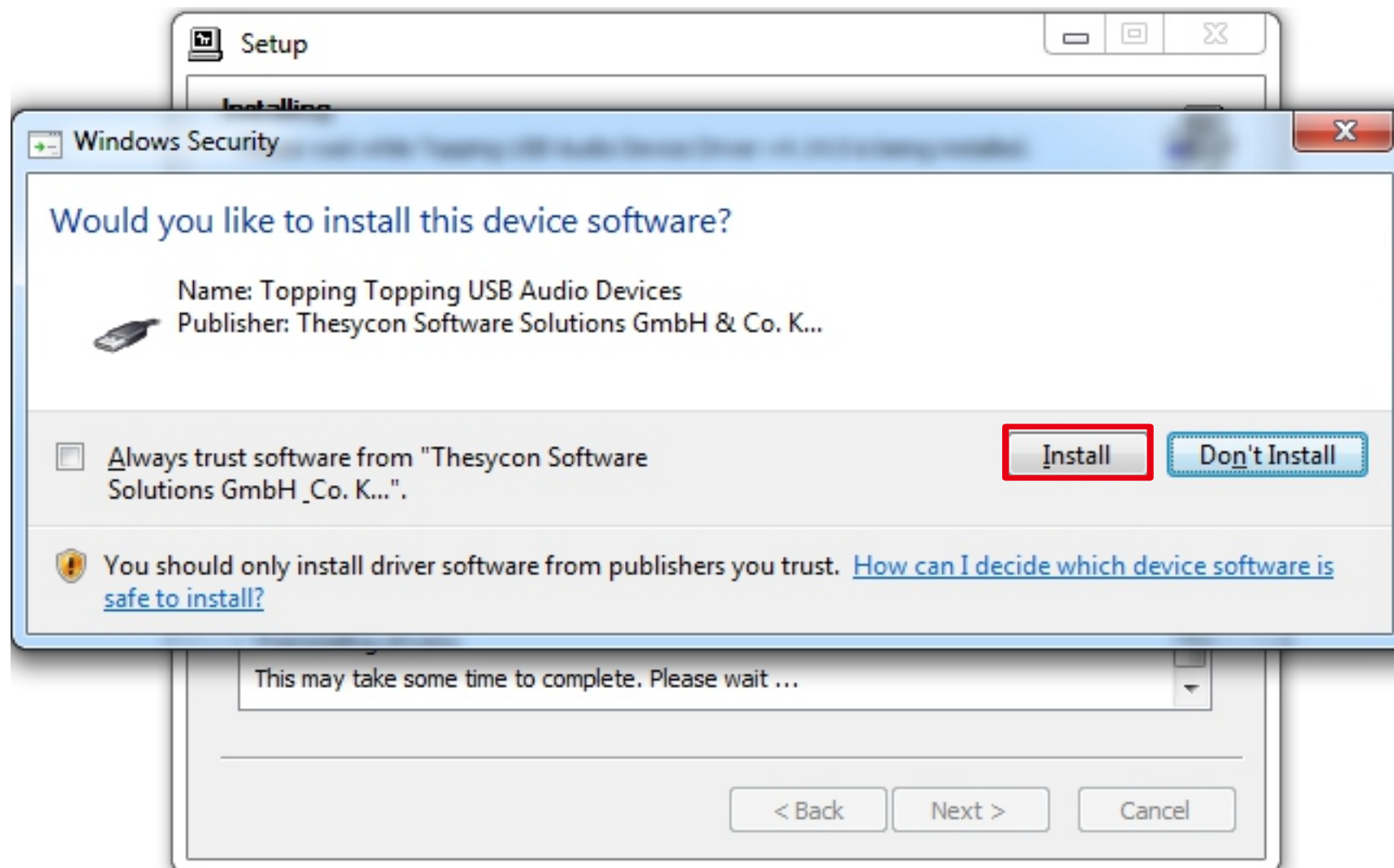
Choose install location then click "Next".



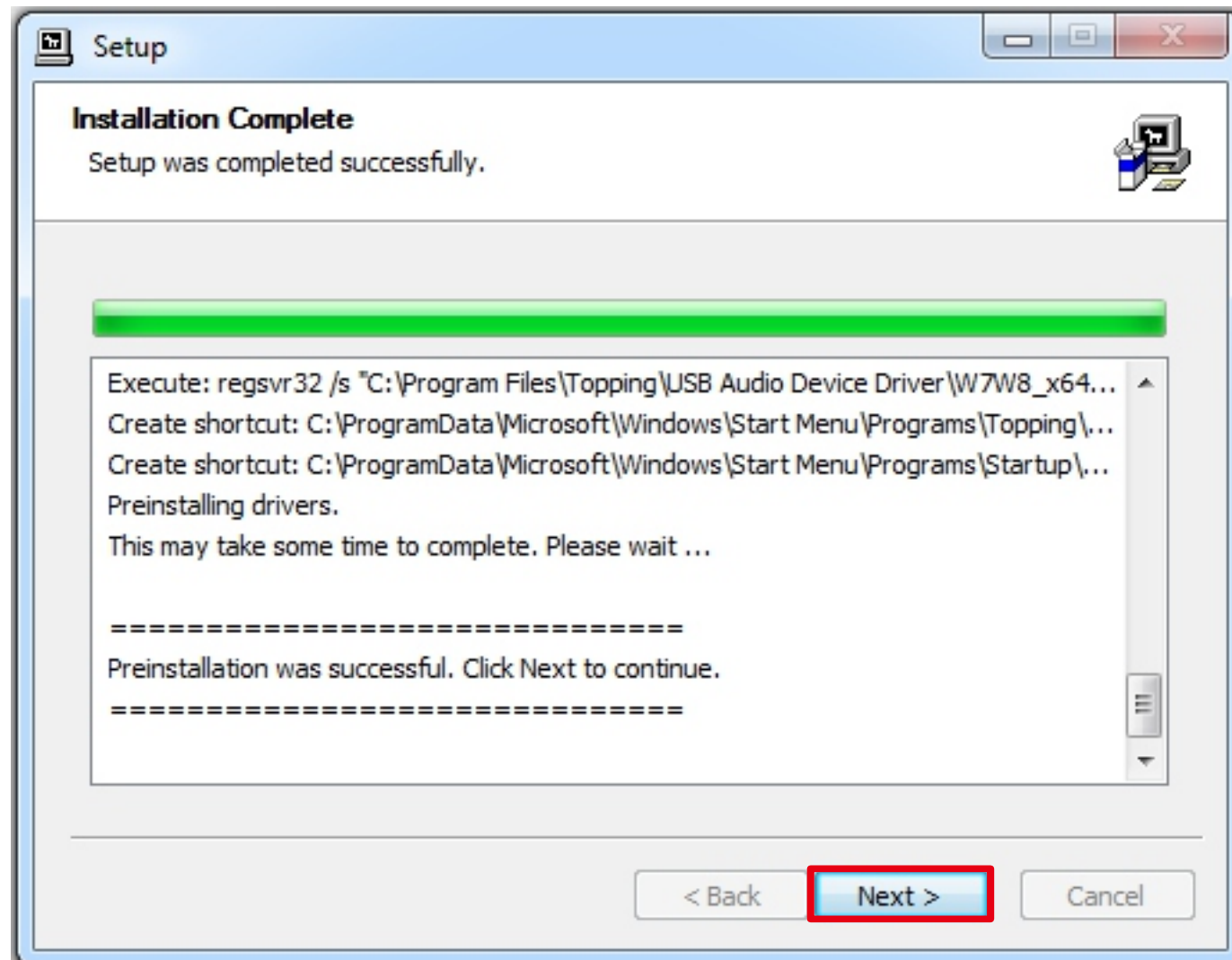
Click "Install" when you see this notice from Windows Security.



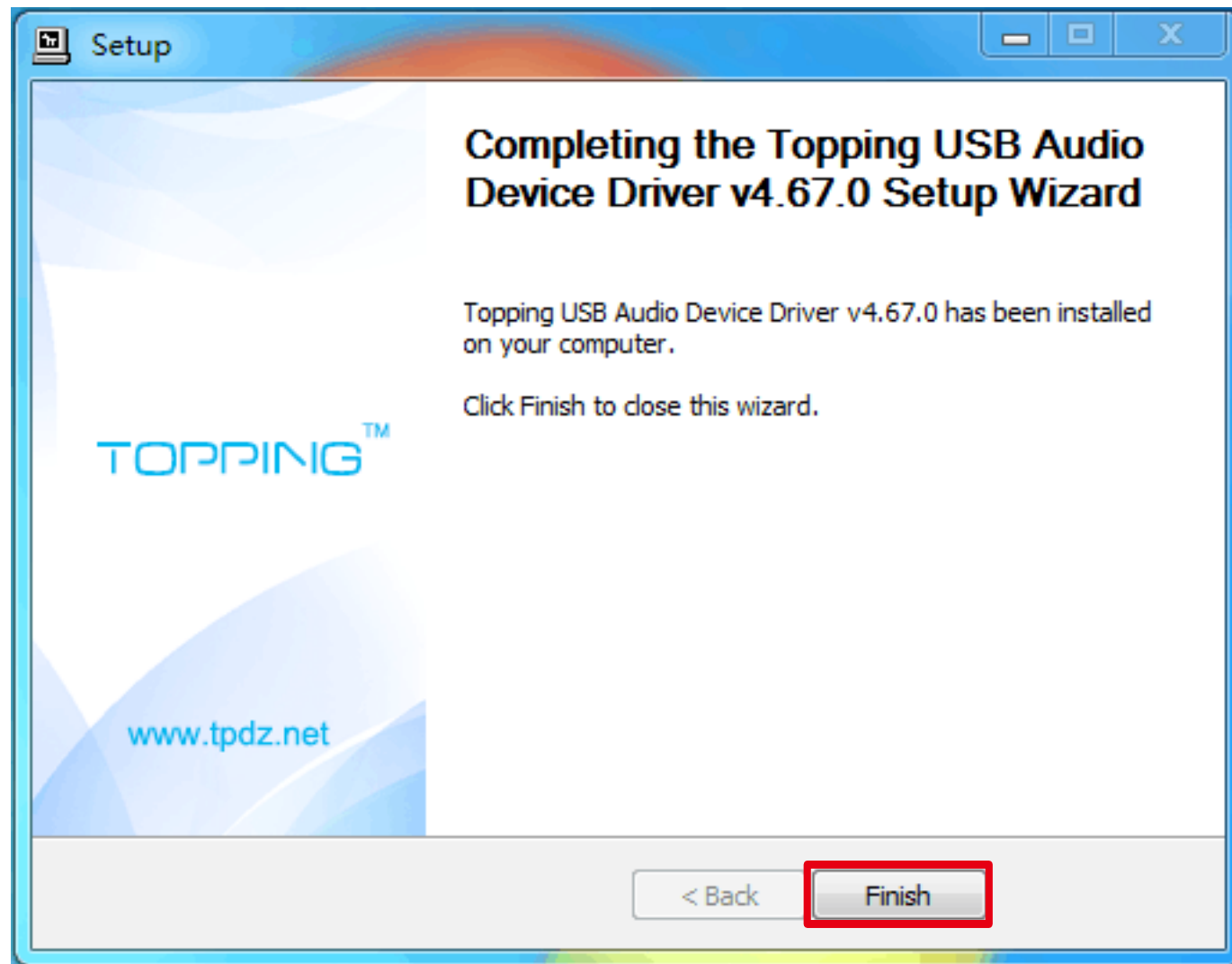
Windows Security will notice it again, please still click "Install".



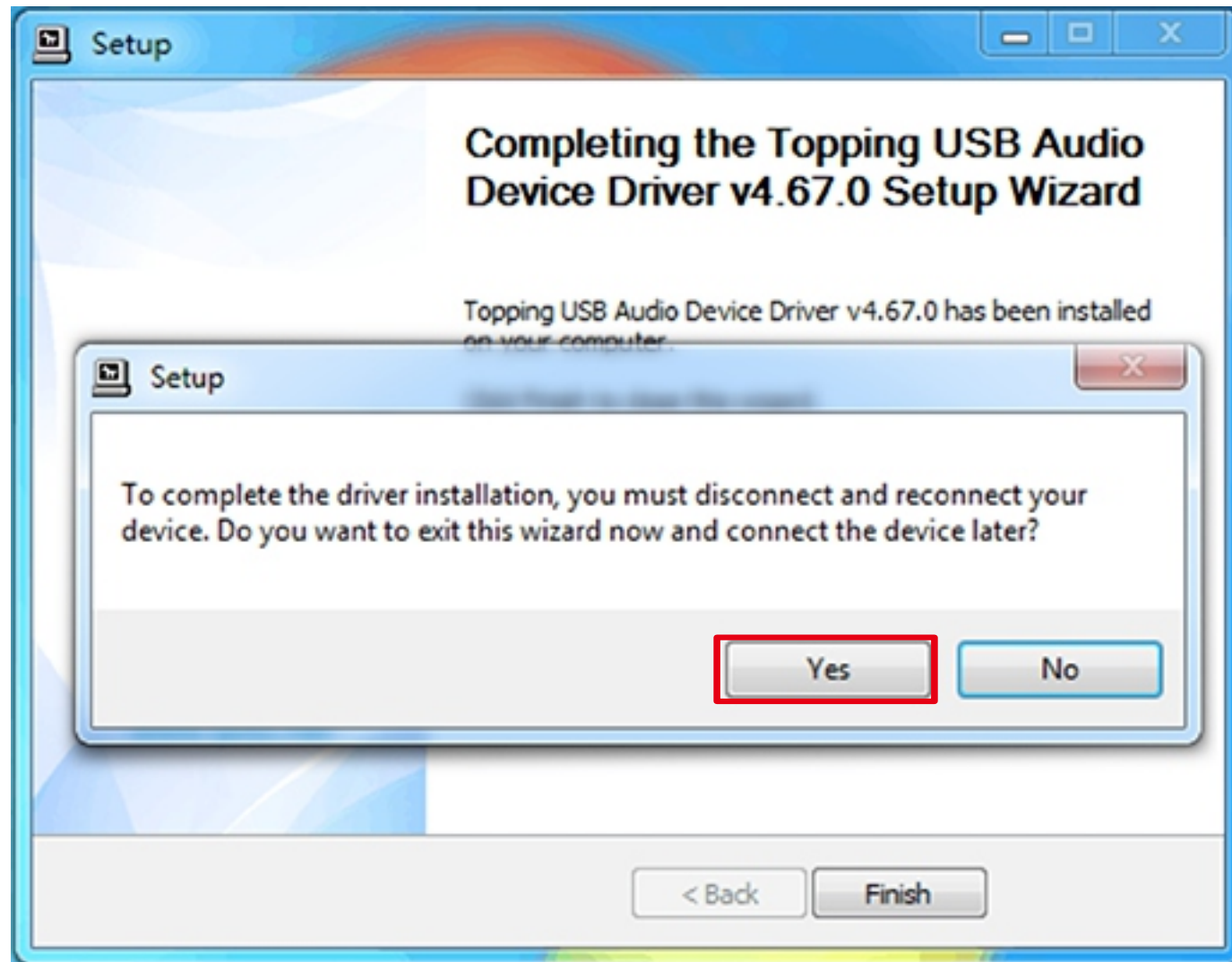
Click "Next".



Click "Finish".



Click "Yes", reconnect Device and finish installation.



TOPPINGTM

Driver and Installation Guide